



L'Orchestre d'hommes-orchestres  
(LODHO)

*Cabaret brise-jour*  
(*shattered cabaret*)

Technical Rider – Version 2.0

Last update: April 14, 2014

*Cabaret brise-jour (shattered cabaret)* is a 95 minutes show (2 x 45 minutes + 15 minutes pause). L'Orchestre d'hommes-orchestres is composed of 7 performers, one performer/lighting designer, and one sound designer/technical director/tour manager (for a total of 9 people). Their booking agent occasionally accompanies them.

## 1. STAGE

- Play area :
  - Width : 7,3 m (24')
  - Depth : 4,9 m (16')
  - Clearance : 7 m (23') \*\*\* minimal clearance of 4,9 m (16')
- Risers should be provided to raise the play area by at least 40 cm (16") (as part of the set more than for viewing reasons).
- *Cabaret brise-jour* contains many small visual elements that needs to be seen by the public in order to appreciate the performance in all its complexity. Hence, the distance between the edge of the stage and the last row of seats should not exceed 18 meters (60').
- Masking: black box, no legs or borders needed.

## 2. BACKLINE

All musical instruments are supplied by the company, except for these, which should be supplied by the presenter:

- 1 x Old upright piano 88 keys, natural wood (no laque), antique style ('30-'50) if possible, tuned to A-440
- 1 x Upright bass (no need for a bow)
- 1 x Guitar amp: Fender Hotrod Deluxe 1 x 12" (ou preapproved equivalent)
- 1 x Bass amp: Eden WTB400C (or Galien-Kruger 700RB-II)
- 1 x Bass cabinet: Eden E410 ST4 (or Galien-Kruger 410RBH)

## 3. SET ELEMENTS AND PROPS

We need 2 loose 0,90 m x 1,80 m x 0,20 m (3' x 6' x 8') risers.

All other set elements and props are supplied by LODHO.

#### 4. LIGHTING

Lights are controlled from the stage, by a computer running a MAX/MSP patch.

We require a DMX connection to the house dimmers (male DMX connector) on stage.

The following instrument list is a generic list. **We work as much as we can with what's in-house.** See appendix for a generic light plot. The plot will be adapted to the venue by our lighting designer according to venue's facilities.

Please confirm with us before making any rentals, to avoid unnecessary fees.

Supplied by the presenter :

- 72 x dimmers 2,4 kW – DMX protocol

##### Instruments

- Lekos/profiles
  - o 7 x ETC Source 4 19° (or PC with corresponding angle)
  - o 16 x ETC Source 4 36° (or 10 PC with corresponding angle and 6 profiles)
  - o 11 x ETC Source 4 zoom 25-50° (or 9 PC with corresponding angles and 2 profiles)
- Fresnels
  - o 17 x 1 kW Fresnel
- Pars
  - o 3 x Source 4 Par VNSP (or Par 64 - CP60)
  - o 11 x Source 4 Par NSP (or Par 64 - CP61)
  - o 6 x Source 4 Par MFL (or Par 64 - CP62)
  - o 1 x Par 64 VNSP (CP60)
  - o 3 x Par 64 MFL (CP62)
- Other
  - o 1 x MR16 Zip strip/strip light 3 circuits (or 6 x 1 kW Fresnels)
  - o 4 x 1 kW Iris1 Strand (or asymmetric floodlights)

##### Hardware

- 4 x 1,8 m (6') booms with metal base (or manfrotto stand)
- 2 x Floor plates
- 1 x MDG Atmosphere haze machine (or equivalent) – with enough CO2 and liquid for the whole run
- All necessary power and DMX cables to connect all in-house devices.
- A power line on stage right for the light control booth

Supplied by LODHO :

- Color filters for all instruments, gobos (2), computer and dmx interface

NOTES :

- All lekos should be equipped with 4 functional shutters
- All fresnel instruments should be equipped with functional barn doors
- All instruments should be equipped with gel frame holders, tight clamps and safety wires.
- Power feed for lighting should be isolated and independent from the sound power feed.

5. SOUND

Supplied by the presenter:

Sound system

- Three-way professional sound system with sub-bass cabinets (d&b Q7 and Q-SUB/B2, Meyer UPJ/UPA and USW-1, L-Acoustics Arc/DV-Dosc and SB218 or preapproved equivalent)
- A central cluster covering the whole audience, on a separate mix (d&b Q10 or equivalent)
- For every audience level, a pair of “surround” speakers (d&b Q10, UPJ or equivalent)
- A pair of speakers to be used as “side-fills” on stage (d&b Q7, UPA-1P or equivalent).
- 4 x 31 band stereo graphic equalizers (main left, main right, center, surround left, surround right, side-fill L, side-fill R)
- 32 channel multipair cable (we need 31 lines). **If the main patchbox can't be installed on stage, please supply subsnakes in order to reach the main patch from the center of the stage.**
- All cables and accessories necessary for the proper operation of the system
- 2 power lines on the same ground as sound equipment to connect musical instruments

Microphones, DI's, stands

- **We supply all microphones, DI's and mic stands**

Also supplied by lodho :

- Yamaha DM1000 sound console + extension cards + preamps
- xlr cables to go to the main patch (or to the subsnakes)

6. VIDEO

Supplied by the presenter:

- 5000 lumens videoprojector with hanging hardware (Panasonic PT-D5600 or equivalent)
- VGA cable from projector to control booth
- CAT-5 cable for remote control of projector

7. CONTROL BOOTH POSITION

The sound booth must be installed in the room, rear center. **No balcony or under-balcony position**, whenever possible. Some seats may have to be cancelled, depending on the venue's layout. A space of 1,50 m x 0,80 m (60" x 32") should be provided for the control booth.

## 8. SET-UP SCHEDULE AND TECHNICAL CREW

The set-up schedule and technical crew needs will depend on theatre's facilities. The following schedule and technical crew needs are just general guidelines. When possible, a light hook-up the day before the first show is preferred (we supply light plans at least a week before).

### Minimum crew needs:

9:00 – 11:00	Light and sound installation. Piano delivery Risers installation (if applicable). 3 lighting technicians 1 sound technician
11:00 – 13:00	Light focus. Musician's arrival. 3 lighting technicians 1 sound technician
14:00 – 15:00	Stage installation. Line check.
15:00 – 17:00	Sound check and rehearsal.
17:00 – 18:00	Lighting touch-ups. 2 lighting technicians 1 sound technician
19:45	Door opens
20:00	First part
20:40	15 minutes pause
20:55	Second part
21:45	Strike and load-out
23:00	End of day

## 9. SPECIAL EFFECTS

One cigarette will be smoked on stage during a number (herbal cigarettes can be used if real cigarettes are prohibited by local regulations).

## 10. PRODUCTION OFFICE AND DRESSING ROOMS

### To be supplied by the presenter :

- 2 clean and heated dressing rooms (for 10 people) with running water (hot and cold), towels, sinks, mirrors, showers and toilets. Access to a washing machine and a dryer should be provided.
- Bottled water in the dressing rooms and backstage, if water from the tap is not drinkable.
- Assorted dry fruits, fresh fruits, nuts, coffee and tea.
- Cold beer after the performance
- Functional internet connection in the dressing rooms.

## 11. ROOMING LIST

2 double rooms (double bed)	Jasmin Cloutier + Danya Ortmann Simon Elmaleh + Gabrielle Bouthillier
5 single rooms	Frédéric Auger / Philippe Lessard Drolet / Simon Drouin / Lyne Goulet / Bruno Bouchard

The agent of the company is sometimes on tour with us. An additional single room is needed in the latter case (to be confirmed with the agent or the tour manager).

## L'ORCHESTRE D'HOMMES-ORCHESTRES

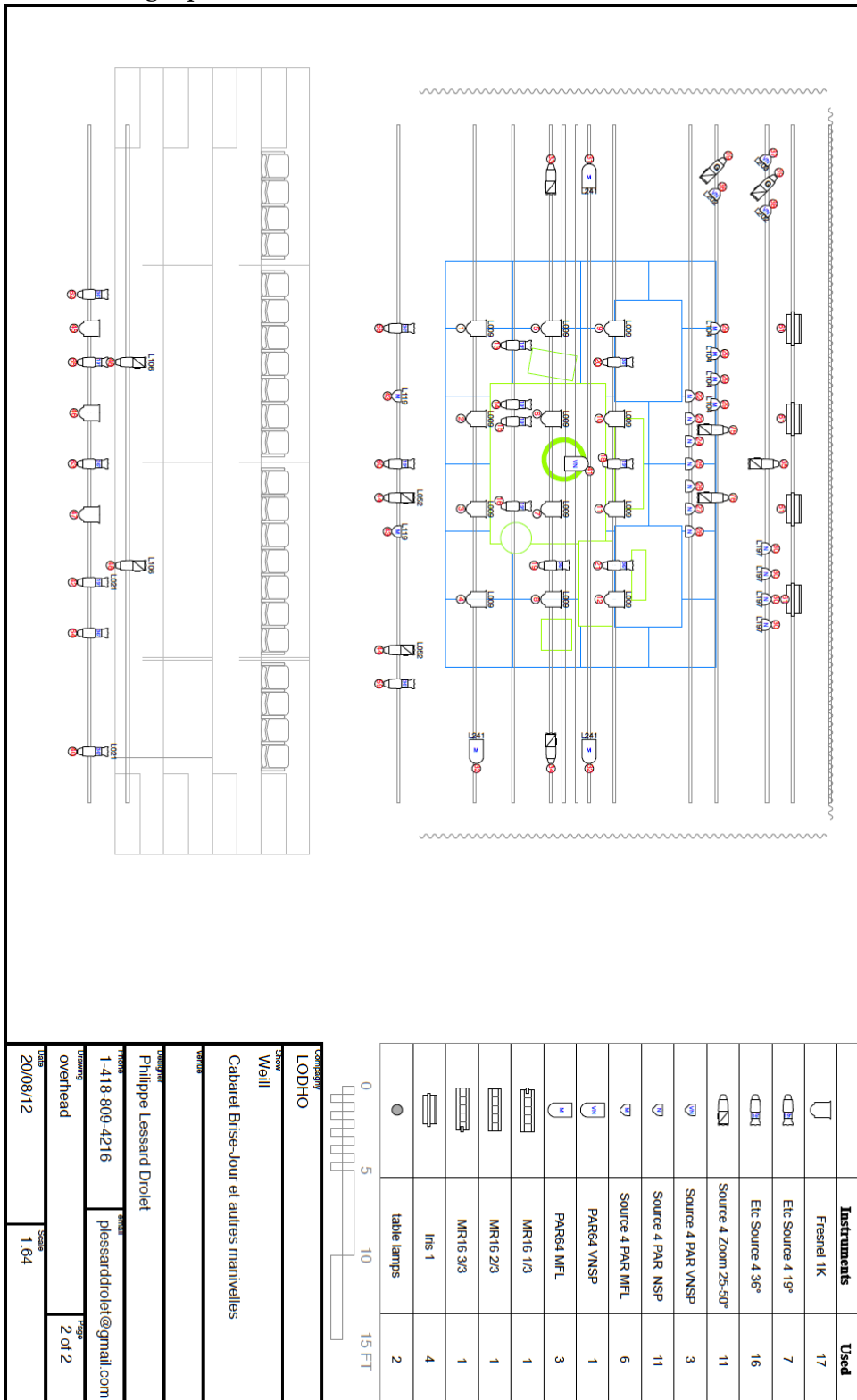
### L'Orchestre d'hommes-orchestres (lodho)

254, rue Bagot  
Québec (Québec) G1K 1V7  
Canada  
001.418.524.0413  
www.lodho.com

<i>Tour manager/sound designer</i>	<b>Frédéric Auger</b> 001.514.271.5755 – frederic.auger@umontreal.ca
<i>Light designer/musician/performer</i>	<b>Philippe Lessard-Drolet</b> mcphiloumastermind@hotmail.com
<i>Musicians/performers</i>	<b>Bruno Bouchard</b> <b>Gabrielle Bouthillier</b> <b>Jasmin Cloutier</b> <b>Simon Drouin</b> <b>Simon Elmaleh</b> <b>Lyne Goulet</b> <b>Danya Ortmann</b>
<i>Agent</i>	<b>Marc Langlois - La Chasse-galerie</b> 001.514.276.9251 – mlanglois.mtl@gmail.com

L'ORCHESTRE D'HOMMES-ORCHESTRES  
 Cabaret brise-jour (shattered cabaret)  
 Technical rider version 2.0 – last update: April 14, 2014

APPENDIX – Generic light plot (overhead)



L'ORCHESTRE D'HOMMES-ORCHESTRES  
*Cabaret brise-jour (shattered cabaret)*  
 Technical rider version 2.0 – last update: April 14, 2014

APPENDIX – Generic light plot (floor)

